



BERMAD Fire Protection

TORRENT 400Y - Product Catalog

FP 400Y TORRENT DELUGE VALVES

Bermad is proud to introduce the FP 400Y Torrent Deluge Valve. For years, Bermad’s Fire Protection valves have been protecting numerous High Hazard On-shore and Off-shore facilities worldwide.

The FP 400 elastomeric globe valves are known for their reliable, long-lasting performance, their ease of installation, inspection and service and their advanced features that led these valves to be the default valve for our customers.

The FP 400Y Torrent Deluge Valve increases the operation envelope of the FP 400 family and takes the solutions provided by these valves a major step forward toward meeting the ever evolving technological market challenges and new international standards including ISO 6182, CEN and others.

While maintaining the FP 400’s technological advantages and features, the Torrent Deluge Valve has an improved flow coefficient Kv, supports higher pressure classes and lets for even easier and quicker in-line service. The Torrent has improved the FP 400’s unique position indicator by adapting it to the industrial quarter-turn standard, allowing the valve to Interface with any monitoring system while preserving its visual position indication. The Torrent is also equipped with a wide range of limit switches and state of the art accessories.

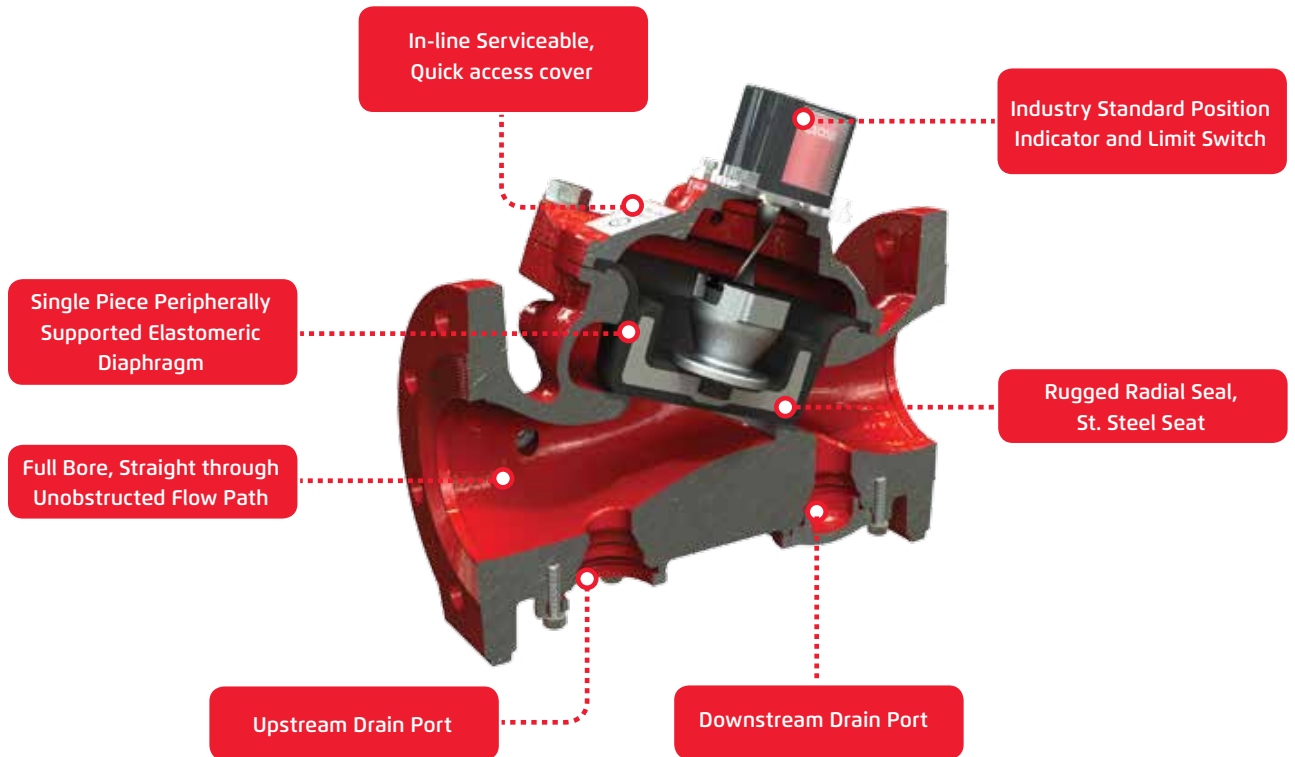
As a leading and ever-improving fire protection applications manufacturer, we are successfully protecting the most precious assets and resources of the High Hazard industry. In the past few decades our FP 400 deluge valves excelled in protecting facilities in the Oil & Gas, Power and Petrochemical industries all over the world.

Our 9 global subsidiaries, operating in over 80 countries and 6 continents, play a key role in our customer’s high satisfaction rate. With our long term experience, market presence, reliability and service we at Bermad Fire Protection attained our customers’ trust and confidence where the success of the 400E valves contributed to this prestigious achievement.

For further information please check out www.bermad.com web site or contact your dealer or company representative.



*Pictures are for illustration only



Features & Benefits

- Simple, time proven - Fail Safe Open FP 400 design
- No mechanical moving parts - High Reliability and Increased Safety
- Single Piece Molded Elastomeric Diaphragm Seal - No maintenance required
- Full Bore, Linear Flow, Unobstructed Flow path - High Capacity Flow and higher Kv
- Quick cover release, No trim dismantling needed – Minimal down time
- In-Line serviceable - Periodical Regulatory NFPA regulatory Inspection friendly
- Lay Length standardized according to ISO 5752/EN 558-1
- Complies with latest international standards including ISO 6182 CEN and others

Optional Accessories

- Industrial modular Visual Position Indicator
- Valve Position Single/Double Limit Switch (True Valve Position Indication)
- Alarm pressure switch
- Sea Water Service, Special Materials
- Drain Valves (Upstream & Downstream for easy system drainage)

Pressure Ratings

Valve Ends	Standard	Class	Max Working Pressure
			psi
Standard Pressure	Flanged ASME/ANSI B16.5 / 16.42 / PN16	#150	235
High Pressure	Flanged ASME/ANSI B16.5 / 16.42 / PN25	#300	365

Flow Properties

Size	2"	3"	4"	6"	8"	10"	12"	14"	16"
Kv (Cv)	80 (92)	190 (219)	345 (398)	790 (912)	1160 (1340)	1355 (1565)	2370 (2737)	2850 (3292)	3254 (3758)

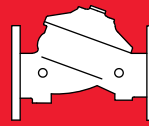
*Pictures are for illustration only

Table of Contents

Group	Description	Model	Page No.
Deluge Valve with Local Reset	Hydraulically Controlled with EasyLock	FP-400Y-1M	6
	Electrically Controlled with EasyLock	FP-400Y-2M	6
	Electrically Controlled with Local Reset Pilot	FP-400Y-3UM	6
	Pneumatically Controlled with Local Reset Pilot	FP-400Y-4M	7
	Hydraulically Controlled Anti Columning with Local Reset Pilot	FP-400Y-5M	7
Deluge Valve with Remote Reset	Electro Pneumatically Controlled with Local Reset Pilot	FP-400Y-6M	7
	Electrically Controlled	FP-400Y-3U	8
Pressure Control Deluge Valve with Local Reset	Electro Pneumatically Controlled	FP-400Y-6U	8
	Hydraulically Controlled	FP-400Y-1MC	9
	Electrically Controlled	FP-400Y-2MC	9
	Pneumatically Controlled	FP-400Y-4DC-H	9
	Electro Pneumatically Controlled	FP-400Y-6DC-H	10
Pressure Control Deluge On-Off / Remote Resetting	Electric Pressure Control On-Off Deluge Valve, 2-Way Solenoid Valve	FP-400Y-2DC	11
	Electrically Controlled	FP-400Y-3DC	11
	Pneumatically Controlled	FP-400Y-4DC	11
	Hydraulically Controlled	FP-400Y-5DC	12
	Electro Pneumatically Controlled	FP-400Y-6DC	12
	Hydraulically Controlled - Differential Pressure	FP-400Y-C-06	12
On-Off Deluge Valve	Electrically Controlled	FP-400Y-3D	13
	Pneumatically Controlled	FP-400Y-4D	13
	Hydraulically Controlled	FP-400Y-5D	13
Locally Operated	Electro-Pneumatically Controlled	FP-400Y-6D	14
	Locally Controlled Monitor/Deluge Valve	FP-400Y-11	15
Pre-Action System and Dry-pipe	Locally Operated Deluge Valve	FP-400Y-1D	15
	Electric Release - Single Interlock	FP-400Y-7M	16
	Electric + Electric Release - Double Interlock	FP-400Y-7BM	16
	Electric + Pneumatic Release - Double Interlock	FP-400Y-7DM	17
Foam Concentrate Zero Pressure	Dry Pipe Valve	FP-400Y-DP	17
	Electrically Controlled	FC-700E-3X-BO-N	18
	Pneumatically Controlled	FC-700E-4X-BO-N	18
	Hydraulically Controlled	FC-700E-5X-BO-N	18
Foam concentrate remote control	Electro-Pneumatically Controlled	FC-700E-6X-BO-N	18
	Electrically Controlled	FC-400Y-3U-N	19
	Pneumatically Controlled	FC-400Y-4U-N	19
Foam concentrate remote control with pressure control	Hydraulically Controlled	FC-400Y-5U-N	19
	Electro-Pneumatically Controlled	FC-400Y-6U -N	19
	Electrically Controlled	FC-400Y-3DC-N	20
	Pneumatically Controlled	FC-400Y-4DC-N	20
Pressure Control	Hydraulically Controlled	FC-400Y-5DC-N	20
	Electro-Pneumatically Controlled	FC-400Y-6DC-N	20
	Pressure Reducing	FP-42T	21
	Fire Pump Control and Check Valve	FP-42T-20	21
	Pressure Differential Reducing Control Valve	FP-42T-06	21
	Hydraulically Operated - Pressure Differential Control Valve	FP-400Y-C-06	22
	Pressure Reducing	FP-720-UL	22
	Pressure Relief	FP-43T	23
	Fire Pump Suction Pressure Control Valve	FP-43T-PS	23
	Pressure Relief	FP-730-UF	23
	Direct Acting Relief Valve ¾"	FP-3HC-0	24
Direct Acting Relief Valve ½"	FP-3PB-0	24	
Anti Surge Pump Start Control Valve	FP-730-48-BL	25	
Differential Pressure Sustaining Valve	FP-43T-06	25	
Pressure Relief Valve with Electric Override	FP-43T-59	25	
Level Control	Level Control Valve with Altitude Pilot	FP-450-82	26
	Modulating Horizontal Float	FP-450-60	26
	Bi Level Electric Float	FP-450-65	26
	Bi Level Vertical Float	FP-450-66/67	26
	Basket Strainer	FP-60F-01	27
Strainers	Basket Strainer with Drain Flange	FP-60F-01-D	27
	Basket Strainer with Drain Valve	FP-60F-01-DV	27
Ordering Guide			29-30
Approvals & Certification			31
Warranty			32

*Pictures are for illustration only





BERMAD Hydraulically Controlled Deluge Valve with EasyLock Local Reset

FP-400Y-1M

The 400Y-1M is activated by a sudden flow and pressure drop in a fusible plug wet pilot line. Once open, the 400Y-1M latches open until locally reset. The 400Y-1M is ideal for systems with open nozzles for water or foam discharge.

- Sizes: 1½" to 16"
- Max Pressure Rating:
 - 1½" to 10" - 25 bar/365 psi
 - 12" to 16" - 20 bar/300 psi
- UL Listed: 1½" to 16"
- FM Approved: 1½" to 8"



BERMAD Electrically Controlled Deluge Valve with EasyLock Local Reset

FP-400Y-2M

The 400Y-2M is activated by a 2-Way solenoid valve. Once open, the 400Y-2M latches open until locally reset.

The 400Y-2M is ideal for systems with open nozzles for water or foam discharge and is available with electrical components to suit any hazardous location.

- Sizes: 1½" to 16"
- Max Pressure Rating:
 - 1½" to 10" - 25 bar/365 psi
 - 12" to 16" - 20 bar/300 psi
- UL Listed: 1½" to 16"
- FM Approved: 1½" to 8"



BERMAD Electrically Controlled Deluge Valve with Local Reset

FP-400Y-3UM

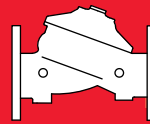
The 400Y-3UM is activated by a 3-way solenoid valve, which actuates a latching relay valve, to open the main valve. Once open the main valve will not close until locally reset.

The 400Y-3UM is ideal for systems with open nozzles for water or foam discharge, available with electric components to suit any hazardous location.

- Sizes: 1½" to 16"
- Max Pressure Rating:
 - 1½" to 10" - 25 bar/365 psi
 - 12" to 16" - 20 bar/300 psi
- UL Listed: 1½" to 16"
- FM Approved: 1½" to 8"



*Pictures are for illustration only



BERMAD Pneumatically Controlled Deluge Valve with Local Reset

FP-400Y-4M

The 400Y-4M is activated by a pneumatic relay valve which latches the main valve open until locally reset. The pneumatic control makes the 400Y-4M applicable for freezing environments and corrosive water supplies. The 400Y-4M is suitable for systems with open nozzles for water or foam discharge.

- Sizes: 1½" to 16"
- Max Pressure Rating:
 - 1½" to 10" - 25 bar/365 psi
 - 12" to 16" - 20 bar/300 psi
- UL Listed: 1½" to 16"
- FM Approved: 1½" to 8"



BERMAD Hydraulically Controlled, Anti-Columning Deluge Valve with Local Reset

FP-400Y-5M

The 400Y-5M is activated by a pressure operated relay valve, which latches the main valve open until locally reset. The 400Y-5M is ideal for systems with remote or elevated wet pilot lines, due to its boosted local pressure release.

- Sizes: 1½" to 16"
- Max Pressure Rating:
 - 1½" to 10" - 25 bar/365 psi
 - 12" to 16" - 20 bar/300 psi
- UL Listed: 1½" to 16"
- FM Approved: 1½" to 8"



BERMAD Electro-Pneumatically Controlled Deluge Valve with Local Reset

FP-400Y-6M

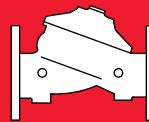
The 400Y-6M is activated by a 3-way solenoid valve which in turn activates a pneumatically dependant relay valve that latches the main valve open until locally reset.

The 400Y-6M is ideal in systems with open nozzles for water or foam discharge, and is available with electric components to suit any hazardous location. also suitable for systems with dual redundant detection.

- Sizes: 1½" to 16"
- Max Pressure Rating:
 - 1½" to 10" - 25 bar/365 psi
 - 12" to 16" - 20 bar/300 psi
- UL Listed: 1½" to 16"
- FM Approved: 1½" to 8"



*Pictures are for illustration only



BERMAD Electrically Controlled Deluge Valve with Remote Reset

FP-400Y-3U

The 400Y-3U is activated by a 3-way solenoid valve which in turn activates a 3 way relay valve to open the deluge valve.

It is available with a latching option that maintains the deluge valve open until de-latched remotely.

The 400Y-3U is ideal for systems with open nozzles for water or foam discharge and is offered with electric components to suit any hazardous location.

- Sizes: 1½" to 16"
- Max Pressure Rating:
 - 1½" to 10" - 25 bar/365 psi
 - 12" to 16" - 20 bar/300 psi
- UL Listed: 1½" to 16"
- FM Approved: 1½" to 8"



BERMAD Electro-Pneumatically Controlled Deluge Valve with Remote Reset

FP-400Y-6U

The 400Y-6U is activated by a 3-way solenoid valve which in turn activates a 3 way pneumatic relay valve to open the deluge valve.

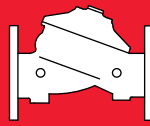
It is available with a latching option that maintains the deluge valve open until de-latched remotely.

The 400Y-6U is ideal for systems with open nozzles for water or foam discharge and is offered with electric components to suit any hazardous location.

- Sizes: 1½" to 16"
- Max Pressure Rating:
 - 1½" to 10" - 25 bar/365 psi
 - 12" to 16" - 20 bar/300 psi
- UL Listed: 1½" to 16"
- FM Approved: 1½" to 8"



*Pictures are for illustration only



BERMAD Hydraulic Pressure Control Deluge Valve with Local Reset

FP-400Y-1MC

The 400Y-1MC is activated by a hydraulic relay valve which latches the deluge valve open until reset locally.

An integral pressure reducing pilot valve ensures a precise, preset and stable downstream system water pressure.

The 400Y-1MC is ideal for systems with open nozzles with a high pressure water supply for water or foam discharge.

- **Sizes:** 1½" to 16"
- **Max Pressure Rating:**
 - 1½" to 10" - 25 bar/365 psi
 - 12" to 16" - 20 bar/300 psi
- **UL Listed:** 1½" to 16"



BERMAD Electric Pressure Control Deluge Valve with Local Reset

FP-400Y-2MC

The 400Y-2MC is activated by a 3-Way solenoid valve, that actuates a latching relay valve opening the main valve. Once open, the valve will not close until locally reset. An integral pressure reducing pilot ensures a stable and precise preset downstream system water pressure.

The 400Y-2MC is ideal for open-nozzle systems with a high pressure water supply and is available with electric components to suit any hazardous location.

- **Sizes:** 1½" to 16"
- **Max Pressure Rating:**
 - 1½" to 10" - 25 bar/365 psi
 - 12" to 16" - 20 bar/300 psi
- **UL Listed:** 1½" to 16"



BERMAD Pneumatic Pressure Control Deluge Valve with Local Reset

FP-400Y-4DC-H

The 400Y-4DC-H is activated by a pneumatic relay valve which latches the main valve open until locally reset.

An integrated pressure reducing pilot valve ensures a stable and precise pre-set downstream water pressure.

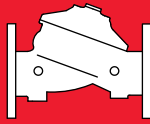
The 400Y-4DC-H is ideal for open-nozzle systems with a high pressure water supply and/or relatively low flow.

The pneumatic control makes the 400Y-4DC-H suitable for freezing environments and corrosive water supplies.

- **Sizes:** 1½" to 16"
- **Max Pressure Rating:**
 - 1½" to 10" - 25 bar/365 psi
 - 12" to 16" - 20 bar/300 psi
- **UL Listed:** 1½" to 16"



*Pictures are for illustration only



BERMAD Electro-Pneumatic Pressure Control Deluge Valve with Local Reset

FP-400Y-6DC-H

The 400Y-6DC-H is activated by a fall in pneumatic pressure caused either by the activation of a sprinkler in the dry pilot line or by an electric signal to the 3 way solenoid valve.

The 6DC-H can be activated remotely either pneumatically or electrically. Once open the 6DC-H latches in the open position, until locally reset.

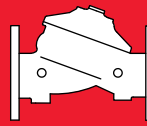
When open an integrated pressure reducing pilot valve regulates the main valve to maintain a precise, stable, pre-set downstream pressure.

The 400Y-6DC-H is ideal for open-nozzle systems with a high pressure water supply. It is available with electrical components to suit any hazardous location.

- **Sizes:** 1½" to 16"
- **Max Pressure Rating:**
 - 1½" to 10" - 25 bar/365 psi
 - 12" to 16" - 20 bar/300 psi
- **UL Listed:** 1½" to 16"



*Pictures are for illustration only



BERMAD Electric Pressure Control On-Off Deluge Valve, 2-Way Solenoid Valve

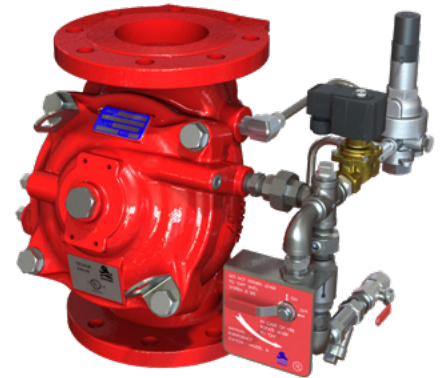
FP-400Y-2DC

The 400Y-2DC is activated by a 2-way solenoid valve by which opening and closing of the deluge valve may be controlled remotely.

An integrated pressure reducing pilot ensures a precise and stable pre-set downstream water pressure.

The 400Y-2DC is ideal for open-nozzle systems with a high pressure water supply and is available with electric components to suit any hazardous location.

- **Sizes:** 1½" to 16"
- **Max Pressure Rating:**
 - 1½" to 10" - 25 bar/365 psi
 - 12" to 16" - 20 bar/300 psi
- **UL Listed:** 1½" to 16"



BERMAD Electric Pressure Control On-Off Deluge Valve

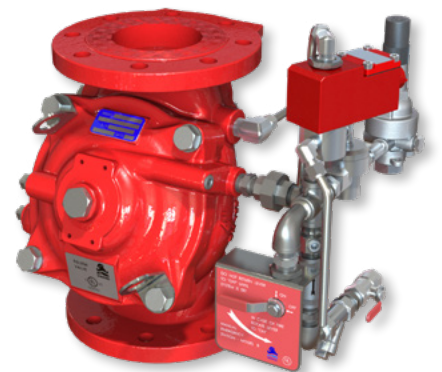
FP-400Y-3DC

The 400Y-3DC is activated by a 3-way solenoid valve by which opening and closing of the deluge valve may be controlled remotely.

An integrated pressure reducing pilot ensures a precise and stable pre-set downstream water pressure.

The 400Y-3DC is ideal for open-nozzle systems with a high pressure water supply and is available with electric components to suit any hazardous location.

- **Sizes:** 1½" to 16"
- **Max Pressure Rating:**
 - 1½" to 10" - 25 bar/365 psi
 - 12" to 16" - 20 bar/300 psi
- **UL Listed:** 1½" to 16"



BERMAD Pneumatic Pressure Control On-Off Deluge Valve

FP-400Y-4DC

The 400Y-4DC is activated by a pneumatic relay valve. Opening and closing of the valve can be controlled remotely.

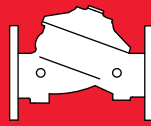
An integrated pressure reducing pilot valve ensures a stable and precise pre-set downstream water pressure.

The BERMAD 400Y-4DC is suitable for open-nozzle systems with a high pressure water supply. The pneumatic control makes it ideal for use in freezing environments and corrosive media.

- **Sizes:** 1½" to 16"
- **Max Pressure Rating:**
 - 1½" to 10" - 25 bar/365 psi
 - 12" to 16" - 20 bar/300 psi
- **UL Listed:** 1½" to 16"



*Pictures are for illustration only



BERMAD Hydraulic Pressure Control On-Off Deluge Valve

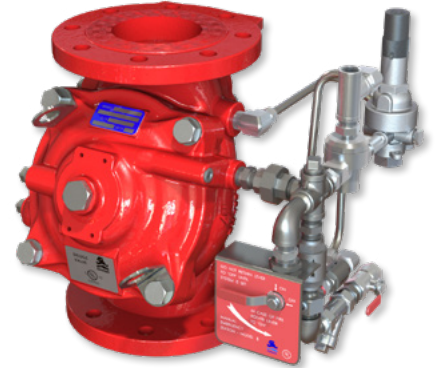
FP-400Y-5DC

The 400Y-5DC is activated by a hydraulically operated relay valve, through which opening and closing of the valve can be controlled either with a remote hydraulic command or with a wet pilot line with closed fusible plugs.

An integral pressure reducing pilot valve ensures a precise, stable, pre-set downstream water pressure.

The 400Y-5DC is ideal for systems that combine a remote wet pilot line with a high pressure water supply.

- Sizes: 1½" to 16"
- Max Pressure Rating:
 - 1½" to 10" - 25 bar/365 psi
 - 12" to 16" - 20 bar/300 psi
- UL Listed: 1½" to 16"



BERMAD Electro Pneumatic Pressure Control On-Off Deluge Valve

FP-400Y-6DC

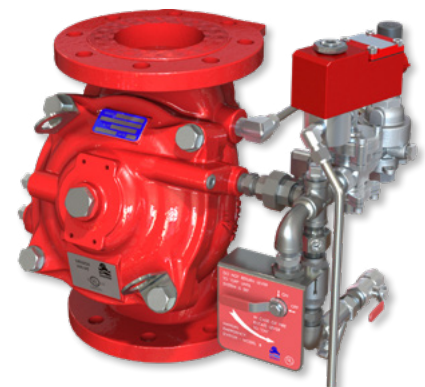
The 400Y 6DC is activated by a fall in pneumatic pressure of the pilot line or by an electric signal to a 3 way solenoid valve.

The 400Y 6DC can be activated remotely either pneumatically or electrically.

When open an integrated pressure reducing pilot valve regulates the main valve to maintain a precise, stable, pre-set downstream pressure.

The 400Y-6DC is ideal for open-nozzle systems with a high pressure water supply. It is available with electrical components to suit any hazardous location.

- Sizes: 1½" to 16"
- Max Pressure Rating:
 - 1½" to 10" - 25 bar/365 psi
 - 12" to 16" - 20 bar/300 psi
- UL Listed: 1½" to 16"



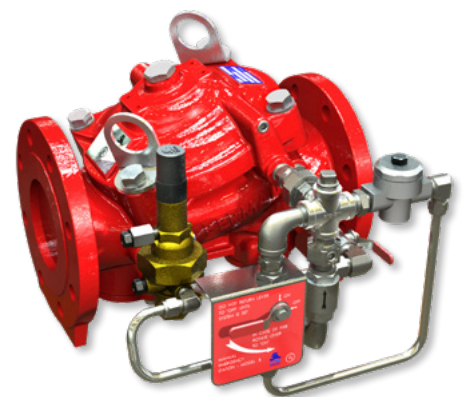
BERMAD Hydraulically Operated Pressure Differential Control Valve (PDCV)

FP-400Y-C-06

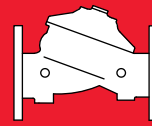
The 400Y-C-06 can be activated by means of an electric, hydraulic or pneumatic signal.

The 400Y-C-06 uses a unique differential sensing pilot to control the differential pressure between two chosen points, typically a foam proportioning pump.

- Max Pressure Rating:
 - 1½" to 10" - 25 bar/365 psi
 - 12" to 16" - 20 bar/300 psi
- UL Listed: 1½" to 16"



*Pictures are for illustration only



BERMAD Electrically Controlled On-Off Deluge Valve

FP-400Y-3D

The 400Y-3D is activated by a 3-way solenoid valve, suitable for electric fire detection systems.

The 400Y-3D is ideal for systems with open nozzles for water or foam discharge.

Available with electric components to suit any hazardous location.

- Sizes: 1½" to 16"
- Max Pressure Rating:
 - 1½" to 10" - 25 bar/365 psi
 - 12" to 16" - 20 bar/300 psi
- UL Listed: 1½" to 16"



BERMAD Pneumatically Controlled On-Off Deluge Valve

FP-400Y-4D

The 400Y-4D is controlled by a pneumatic relay valve, typically activated by a decrease in pressure of a pneumatic pilot line.

The 400Y-4D can also be operated remotely. The BERMAD 400Y 4D is ideal for use in systems with open nozzles for water or foam discharge also well suited for use with corrosive media or where freezing temperatures might be experienced.

- Sizes: 1½" to 16"
- Max Pressure Rating:
 - 1½" to 10" - 25 bar/365 psi
 - 12" to 16" - 20 bar/300 psi
- UL Listed: 1½" to 16"



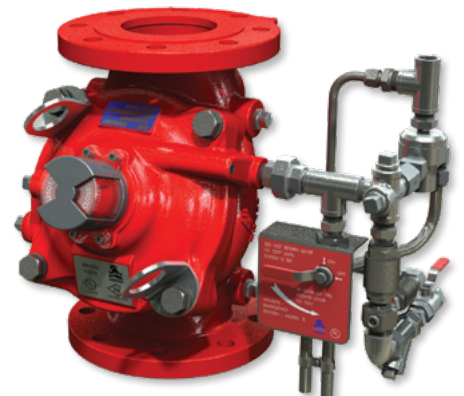
BERMAD Hydraulically Controlled On-Off Deluge Valve

FP-400Y-5D

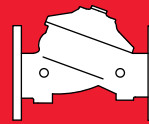
The 400Y-5D is activated by a hydraulic relay valve, by which opening and closing of the valve can be controlled remotely.

The 400Y-5D is suited to systems with remote release wet pilot lines.

- Sizes: 1½" to 16"
- Max Pressure Rating:
 - 1½" to 10" - 25 bar/365 psi
 - 12" to 16" - 20 bar/300 psi
- UL Listed: 1½" to 16"



*Pictures are for illustration only



BERMAD Electro-Pneumatically Controlled On-Off Deluge Valve

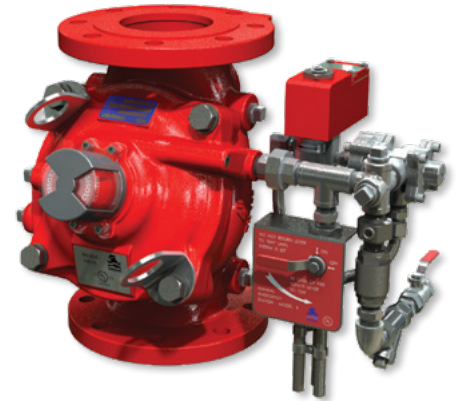
FP-400Y-6D

The 400Y-6D is suitable for systems that include electric or redundant (electric or pneumatic) fire detection systems.

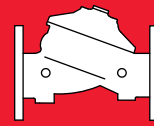
It opens in response to an electric signal and/ or a drop in pressure of a pneumatic pilot line.

The 400Y-6D is ideal for open-nozzle systems and is available with electrical components to suit any hazardous location.

- **Sizes:** 1½" to 16"
- **Max Pressure Rating:**
 - 1½" to 10" - 25 bar/365 psi
 - 12" to 16" - 20 bar/300 psi
- **UL Listed:** 1½" to 16"



*Pictures are for illustration only



BERMAD Locally Operated Monitor Valve

FP-400Y-11

The 400Y-11 is activated manually by opening the local Manual Release Valve on the control trim.

The 400Y-11 is well suited for installation directly before high capacity water/foam monitors as a type approved quick opening water control valve.

The standard trim features the release valve positioned locally on the valve, optionally the release valve can be positioned remotely, enabling valve operation from a distance.

- **Sizes:** 1½" to 16"
- **Max Pressure Rating:**
 - 1½" to 10" - 25 bar/365 psi
 - 12" to 16" - 20 bar/300 psi



BERMAD Locally Operated Monitor/Deluge Valve

FP-400Y-1D

The 400Y-1D is activated manually by opening the local Manual Release Valve attached to the valve's control trim.

The 400Y-1D is ideal for use as a locally operated deluge valve for water spray or foam system nozzles.

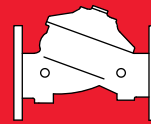
It is also well suited for installation directly before high capacity water/foam monitors as a Listed/Approved quick opening water control valve.

As standard the release valve is positioned locally on the valve, optionally the release valve can be positioned remotely enabling valve operation from a distance.

- **Sizes:** 1½" to 16"
- **Max Pressure Rating:**
 - 1½" to 10" - 25 bar/365 psi
 - 12" to 16" - 20 bar/300 psi
- **UL Listed:** 1½" to 16"



*Pictures are for illustration only



BERMAD Single Interlock Pre-action System Electric Release

FP-400Y-7M

The Single Interlock Electric Release is suitable for use in systems requiring that water be kept out of the sprinkler piping until an electric detecting device is activated. Single Interlock Pre-Action Systems include automatic sprinklers attached to a dry sprinkler piping system, with a supplementary electric detection system installed in the same area. This system admits water into the sprinkler piping upon activation of the detection system. Water is discharged only through sprinklers that have been opened due to excessive heat.

When a Supervised System is required, a pneumatic low pressure supply shall be provided through a proper Air Maintenance Device (AMD-74 or 75), also an anti-flooding feature is provided by utilizing an in-line check valve, which creates an intermediate vented chamber using a Normally Open drip-check.

- **Sizes:** 1½" to 16"
- **Max Pressure Rating:**
 - 1½" to 10" - 25 bar/365 psi
 - 12" to 16" - 20 bar/300 psi
- **UL Listed:** 1½" to 16"
- **FM Approved:** 1½" to 8" - 16 bar/235 psi



BERMAD Double Interlock Pre-action System Electric-Electric Release

FP-400Y-7BM

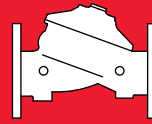
The Double Interlock Pre-Action is suitable for use in systems requiring that water be kept out of the sprinkler piping until an electric detecting device and a sprinkler have both been activated. Electric-Electric double interlock systems include automatic sprinklers attached to a dry sprinkler piping system with a low air pressure switch, along with a supplementary electric detection system which are both wired to a Cross-Zone releasing control panel.

Model FP 400Y-7BM Pre-Action System admits water into the sprinkler piping only when both the detection device and the supervised systems simultaneously signal the control panel to trigger the solenoid valve. An anti-flooding feature is provided by using an in-line check valve, which creates an intermediate vented chamber using a Normally Open drip-check.

- **Sizes:** 1½" to 16"
- **Max Pressure Rating:**
 - 1½" to 10" - 25 bar/365 psi
 - 12" to 16" - 20 bar/300 psi
- **UL Listed:** 1½" to 16"
- **FM Approved:** 1½" to 8" - 16 bar/235 psi



*Pictures are for illustration only



BERMAD Double Interlock Pre-action System Electric-Pneumatic Release

FP-400Y-7DM

The 400Y-7DM admits water into the sprinkler system piping only when both the electric detection device and the pneumatic supervised systems are simultaneously activated.

An anti-flooding feature is provided by using an in-line check valve, which creates an intermediate vented chamber using a Normally Open drip check.

- **Sizes:** 1½" to 16"
- **Max Pressure Rating:**
 - 1½" to 10" - 25 bar/365 psi
 - 12" to 16" - 20 bar/300 psi
- **UL Listed:** 1½" to 16"
- **FM Approved:** 1½" to 8" - 16 bar/235 psi



BERMAD Dry Pipe Sprinkler Valve

FP-400Y-DP

The BERMAD model 400Y-DP utilizes an elastomeric deluge valve, designed specifically for advanced fire protection systems and the latest industry standards.

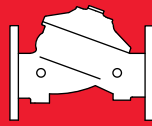
Dry-pipe systems include automatic sprinklers attached to pressurized dry sprinkler piping with supplementary electric monitoring and a Supervised Pneumatic system installed in the same area.

The 400Y-DP admits water into the sprinkler system piping when there is a drop in pressure in the piping due to the opening of one or more fusible head sprinklers.

- **Sizes:** 1½" to 10"
- **Max Pressure Rating:** 25 bar/365 psi
- **UL Listed:** 1½" to 10"
- **FM Approved:** 1½" to 8"



*Pictures are for illustration only



The BERMAD Zero pressure foam concentrate control valves are all stainless steel, hydraulically operated double chambered valves and can use existing firewater pressure to fully open or close. This makes their operation independent of the foam concentrate pressure, enabling functionality at very low pressure or even non-pressurized foam concentrate.

They have an over the seat design giving them drip tight sealing and an inherent "fail safe close" characteristic.

These valves can share the opening command of a main deluge valve, whether electric, hydraulic or pneumatic. This ensures a perfect synchronization of the opening of the foam concentrate valve with the opening of the deluge valve and admission of firewater into the system.

These valves replace mechanically operated valves to provide safer operation for modern foam systems, assuring maximum reliability.

BERMAD Zero Pressure, Solenoid Activated, Remote Control Foam Concentrate Valve

FC-700E-3X-BO-N

The BERMAD FC 700E-3X-BO is a Double Chambered hydraulically powered foam-concentrate valve, controlled electrically by a solenoid valve.

- Sizes: 1½" to 4"
- Max Pressure Rating: 28 bar/400 psi



BERMAD Zero Pressure, Pneumatically Controlled Remote Control, Foam Concentrate Valve

FC-700E-4X-BO-N

The BERMAD FC 700E-4X-BO is a Double Chambered hydraulically operated Foam- concentrate valve, controlled by a 3-Way pneumatic relay valve.

- Sizes: 1½" to 4"
- Max Pressure Rating: 28 bar/400 psi



BERMAD Zero Pressure, Hydraulically Operated, Remote Control Foam Concentrate Valve

FC-700E-5X-BO-N

The BERMAD FC 700E-5X-BO is a Double Chambered hydraulically powered Foam-concentrate valve, controlled by a 3-Way hydraulic relay valve.

- Sizes: 1½" to 4"
- Max Pressure Rating: 28 bar/400 psi



Zero Pressure, Electro-Pneumatically Operated Remote Control, BERMAD Foam Concentrate Valve

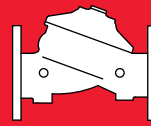
FC-700E-6X-BO-N

The BERMAD FC 700E-6X-BO is a Double Chambered hydraulically operated foam-concentrate valve, is controlled electro-pneumatically using a solenoid valve to command a pneumatic relay valve

- Sizes: 1½" to 4"
- Max Pressure Rating: 28 bar/400 psi



*Pictures are for illustration only



BERMAD Electrically Operated, Remote Control Foam Concentrate Valve

FC-400Y-3U-N

The FC-400Y-3U-N is of all stainless steel construction. It is activated electrically by a 3-way solenoid valve to open a 3-Way relay valve that opens the main valve. Suited for foam concentrate control, local or remote.

- Sizes: 1½" to 4"
- Max Pressure Rating: 25 bar/365 psi
- UL Listed
- FM Approved



BERMAD Pneumatically Operated, Remote Control Foam Concentrate Valve

FC-400Y-4U-N

The FC-400Y-4U-N is of all stainless steel construction. It is activated by a pneumatic command to a 3-Way relay valve that opens the main valve. Suited for foam concentrate control, local or remote.

- Sizes: 1½" to 4"
- Max Pressure Rating: 25 bar/365 psi
- UL Listed



BERMAD Hydraulically Operated, Remote Control Foam Concentrate Valve

FC-400Y-5U-N

The FC-400Y-5U-N is of all stainless steel construction. It is activated by a hydraulic command to a 3-Way relay valve that opens the main valve. Suited for foam concentrate control with local or remote command.

- Sizes: 1½" to 4"
- Max Pressure Rating: 25 bar/365 psi
- UL Listed



BERMAD Electro-Pneumatically Operated, Remote Control Foam Concentrate Valve

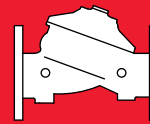
FC-400Y-6U-N

The FC-400Y-6U-N is of all stainless steel construction. It is activated by an electric command to a 3-Way solenoid that vents the relay valve control chamber to open the main valve, which in turn activates a 3-way relay valve to open the main valve. Suited for foam concentrate control with local or remote command.

- Sizes: 1½" to 4"
- Max Pressure Rating: 25 bar/365 psi
- UL Listed
- FM Approved



*Pictures are for illustration only



BERMAD Electric Pressure Control, Foam Concentrate Valve

FC-400Y-3DC-N

The BERMAD FC-400Y-3DC-N, is all of all stainless steel construction. An integrated pressure reducing pilot ensures a precise and stable pre-set downstream water pressure.

It is activated by a 3-way solenoid valve by which opening and closing of the valve may be controlled remotely.

When fitted with the differential sensing option (BERMAD code 06) this valve is ideal for differential pressure control in proportional foam systems.

- Sizes: 1½" to 4"
- Max Pressure Rating: 25 bar/365 psi
- UL Listed



BERMAD Pneumatic Pressure Control, Foam Concentrate Valve

FC-400Y-4DC-N

The BERMAD FC-400Y-4DC-N is off all stainless steel construction. An integrated pressure reducing pilot ensures a precise and stable pre-set downstream water pressure.

It is activated by a pneumatic relay valve, by which opening and closing of the valve can be controlled remotely.

When fitted with the differential sensing option (BERMAD code 06) this valve is ideal for differential pressure control in proportional foam systems.

- Sizes: 1½" to 4"
- Max Pressure Rating: 25 bar/365 psi
- UL Listed



BERMAD Hydraulic Pressure Control, Foam Concentrate Valve

FC-400Y-5DC-N

The BERMAD FC-400Y-5DC-N is off all stainless steel construction. An integrated pressure reducing pilot ensures a precise and stable pre-set downstream water pressure.

It is activated by a hydraulic relay valve, by which opening and closing of the valve can be controlled remotely.

When fitted with the differential sensing option (BERMAD code 06) this valve is ideal for differential pressure control in proportional foam systems.

- Sizes: 1½" to 4"
- Max Pressure Rating: 25 bar/365 psi
- UL Listed



BERMAD Electro-Pneumatic Control, Foam Concentrate Valve

FC-400Y-6DC-N

The BERMAD FC-400Y-6DC-N is of all stainless steel construction. An integrated pressure reducing pilot ensures a precise and stable pre-set downstream water pressure.

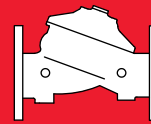
It is activated by an electro/pneumatic relay valve, by which opening and closing of the valve can be controlled remotely.

When fitted with the differential sensing option (BERMAD code 06) this valve is ideal for differential pressure control in proportional foam systems.

- Sizes: 1½" to 4"
- Max Pressure Rating: 25 bar/365 psi
- UL Listed



*Pictures are for illustration only



BERMAD Pressure Reducing Valve

FP-42T

The 42T reduces high upstream pressure to a precise, preset, stable downstream pressure. Due to its exceptional reliability and low head loss the 42T is ideal for control of fire pump discharge and well-suited to prevent over pressure in sprinklers, hose stations, and other discharge devices.

- **Sizes:** 1½" to 16"
- **Max Pressure Rating:**
 - 1½" to 10" - 25 bar/365 psi
 - 12" to 16" - 20 bar/300 psi
- **UL Listed:** 1½" to 16"
- **FM Approved:** 1½" to 10"



BERMAD Fire Pump Control and Check Valve

FP-42T-20

The BERMAD model 42T-20 is an elastomeric, hydraulically operated, self actuated Non Return Fire Pump Pressure Control Valve, designed for advanced fire protection systems meeting the NFPA-20 guidelines.

The 42T-20 is used for controlling the flow and pressure at the pump discharge, performing also as a non return check valve.

The 42T-20 prevents pump startup surge, typically caused by the accelerated water flow during the fire pump starts.

The valve also helps to prevent pump start negative suction pressure, preventing pump cavitation damage.

Due to exceptional reliability, safe actuation and low head loss, the 42T-20 is highly suited for fire pump discharge pressure control applications.

- **Sizes:** 1½" to 16"
- **Max Pressure Rating:**
 - 1½" to 10" - 25 bar/365 psi
 - 12" to 16" - 20 bar/300 psi
- **UL Listed:** 1½" to 16"



BERMAD Pressure Differential Reducing Control Valve

FP-42T-06

The BERMAD model 42T-06 is an elastomeric hydraulic line pressure driven differential reducing valve, specifically designed for advanced fire protection systems and the latest industry standards.

The 42T-06 is equipped with an adjustable differential pilot valve and is used to maintain a set pressure differential between two different points.

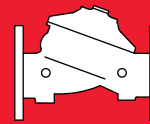
When the differential between the two sensed pressures approaches the pre-set maximum the pilot valve starts to close the main valve regulating the pressure and preventing the differential from rising further.

The 42T-06 is ideal for balanced foam proportioning systems, also as a safeguard for dosing pump flow overload.

- **Sizes:** 1½" to 16"
- **Max Pressure Rating:**
 - 1½" to 10" - 25 bar/365 psi
 - 12" to 16" - 20 bar/300 psi



*Pictures are for illustration only



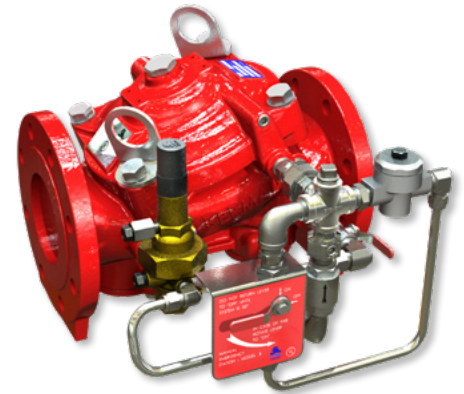
BERMAD Hydraulically Operated Pressure Differential Control Valve (PDCV)

FP-400Y-C-06

The 400Y-C-06 can be activated by means of an electric, hydraulic or pneumatic signal.

The 400Y-C-06 uses a unique differential sensing pilot to control the differential pressure between two chosen points, typically a foam proportioning pump.

- **Sizes:** 1½" to 16"
- **Max Pressure Rating:**
 - 1½" to 10" - 25 bar/365 psi
 - 12" to 16" - 20 bar/300 psi
- **UL Listed:** 1½" to 16"



BERMAD Pressure Reducing Valve

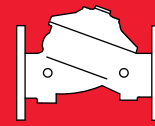
FP-720-UL

The Model FP 720-UL Pressure Reducing Valve reduces high, unstable upstream pressure to maintain precise stable downstream pressure, regardless of changing upstream pressure or flow, and requires only existing line pressure to operate.

- **Sizes:** 1½" to 16"
- **Max Pressure Rating:** 28 bar/400 psi
- **UL Listed:** 2" to 6" - 21 bar/300 psi
8" - 12 bar/175 psi



*Pictures are for illustration only



BERMAD Pressure Relief Valve

FP-43T

The 43T prevents damage from over-pressure in piping systems, maintaining a preset upstream pressure limit regardless of pressure peaks and fluctuating conditions. Due to exceptional reliability and low head loss, it is ideal for relief of fire pump discharge. The 43T dependably relieves excess system pressure to sump or atmosphere, meeting all NFPA, UL, and FM requirements for fire pump service. The 43T is also well-suited for maintaining foam concentrate discharge pressure for a balanced proportioning system.

- **Sizes:** 1½" to 16"
- **UL Listed:** 1½" to 10" - 365 psi (25 bar)
- **FM Approved:** 1½" to 8" - 25 bar/365 psi
10" - 21 bar/300 psi

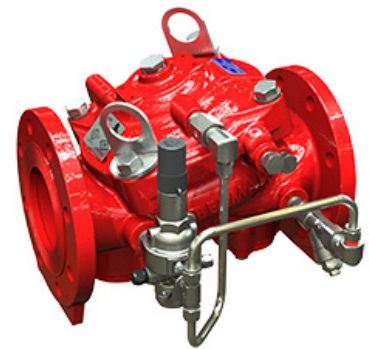


BERMAD Fire Pump Suction Pressure Control Valve

FP-43T-PS

The 43T-PS is used to control and sustain pump suction pressure at the pump inlet at an adjustable preset minimum value. This ensures a continued pressure supply to systems sharing the same supply line as well as preventing cavitation damage. Due to exceptional reliability, fail safe opening, fast reaction and low head loss, the 43T-PS is highly suited for fire pump discharge pressure control applications.

- **Sizes:** 1½" to 16"
- **FM Approved:** 1½" to 8" - 25 bar/365 psi
10" - 21 bar/300 psi



BERMAD Pressure Relief Valve

FP-730-UF

The BERMAD Model FP 730-UF pilot operated relief valve prevents overpressure, maintaining a constant preset system pressure regardless of fluctuating conditions.

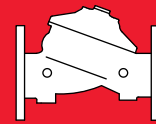
It is UL-Listed (up to 350 psi) and FM-Approved in accordance with NFPA-20.

The valve offers reliable performance when installed in: Refineries, petrochemical complexes, tank farms, high-rise buildings, aviation and airports, marine and on-shore installations.

- **Sizes:** 1½" to 16"
- **Max Pressure Rating:** 24 bar/350 psi
- **UL Listed:** 2" to 6" - 24 bar/350 psi
8" - 12 bar/175 psi
- **FM Approved:** 2" to 8" - 14 bar/200 psi



*Pictures are for illustration only



BERMAD Direct Acting Pressure Relief Valve 3/4", FM Approved

FP-3HC-0

The BERMAD model FP- 3HC-0 is a direct acting, spring loaded, diaphragm type, relief valve.

The single port is held closed buy the force of the adjustable spring located above the pressure sensing diaphragm.

When the force of the pressure sensed under the diaphragm exceeds the force of the spring the valve will open to relieve pressure and will close tight when pressure falls below the pre-set value.

This FM approved valve is well suited for use in protecting wet pipe systems from overpressure that occurs from temperature fluctuations and for fire pump casing relief as required by the NFPA 20 and NFPA 13 standards.

- Max Pressure Rating: 25 bar/365 psi
- FM Approved
- UL Listed



BERMAD Sprinkler Pressure Relief Valve 1/2"(M) inlet/1/4" outlet, FM Approved

FP-3PB-0

The BERMAD model FP-3PB-0 is a direct acting, spring loaded, diaphragm type relief valve.

The single port is held closed buy the force of the adjustable spring located above the pressure sensing diaphragm.

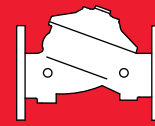
When the force of the pressure sensed under the diaphragm exceeds the force of the spring the valve will open to relieve pressure and will close tight when pressure falls below the pre-set value.

This FM approved valve is well suited for use in protecting wet pipe Systems, pilot lines and Fusible sprinkler lines from overpressure occurring from temperature fluctuations, pump start up spikes and other excess pressure events.

- Max Pressure Rating: 25 bar/365 psi
- FM Approved: 25 bar/365 psi



*Pictures are for illustration only



BERMAD Anti-Surge Pump Start Control Valve

FP-730-48-BL

The BERMAD 730-48-BL is a Normally Open, Anti Surge, pilot-operated and diaphragm-actuated control valve.

It has a double-chambered actuator for positive and reliable actuation with an external lift spring, giving the valve its normally open characteristic.

This affords the BERMAD 730-48-BL a zero reaction time, pre-empting and dissipating any pressure surge or excess air at pump start up.

Once the surge has passed and system piping pressure has normalized the 730-48-BL will close and will continue duty as a relief valve, relieving pressure spikes when needed, keeping the system pressure at its designed level.

The 730-48-BL is an autonomous valve operating under line pressure alone requiring no external power source.

- **Sizes:** 1½" to 16"
- **Max Pressure Rating:** 25 bar/365 psi



BERMAD Differential Pressure Sustaining Valve

FP-43T-06

The BERMAD model 43T-06 is an elastomeric hydraulic line pressure operated differential sustaining valve,

specifically designed for advanced fire protection systems and the latest industry standards.

The 43T-06 is equipped with an adjustable differential pilot valve and is used to sustain the differential between two different points.

When the differential between the two sensed pressures rises above the pre-set value the pilot valve opens the main valve regulating the pressure and keeping the differential at the pre-set maximum.

The 43T-06 is ideal for balanced foam proportioning systems, also as a safeguard for dosing pump excessive flow.

- **Sizes:** 1½" to 16"
- **Max Pressure Rating:** 25 bar/365 psi



BERMAD Pressure Relief Valve with Electric Override

FP-43T-59

The BERMAD model FP 43T-59 is an elastomeric hydraulic line pressure operated relief valve, combining pressure relief with a pre-opening feature.

The 43T-59 Pressure Relief Valve prevents damage from overpressure in piping systems, ensuring a maximum preset upstream pressure limit regardless of pressure peaks and fluctuating conditions.

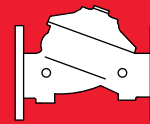
The 43T-59 includes a pre-opening feature, whereby full opening of the valve can be achieved by an electric command. This function may be used to relieve and quell anticipated surge such as might occur during pump start-up.

After the anticipated surge has passed, electric signal termination returns the valve to normal pressure relief duty..

- **Sizes:** 1½" to 16"
- **Max Pressure Rating:** 25 bar/365 psi



*Pictures are for illustration only



BERMAD Level Control Valve with Altitude Pilot

FP-450-82

The BERMAD FP 450-82 Level Control Valve is a hydraulically controlled, diaphragm actuated automatic control valve that shuts at pre-set high reservoir level and opens in response to level drop, keeping the reservoir full.

The water level is maintained by the use of a highly accurate pilot valve that precisely senses the water level head from a sensing point at the bottom of the reservoir and controls the main filling valve accordingly.

This eliminates the need for the installation of a float mechanism, making it ideal for high level reservoirs.

- **Sizes:** 1½" to 14"
- **Max Pressure Rating:** 16 bar/235 psi



BERMAD Level Control Valve with Modulating Horizontal Float

FP-450-60

The Model FP 450-60 Level Control Valve with Modulating Horizontal Float is a hydraulically controlled, diaphragm actuated, control valve that controls reservoir filling to maintain constant water level, regardless of fluctuating demand.

- **Sizes:** 1½" to 14"
- **Max Pressure Rating:** 16 bar/235 psi



BERMAD Level Control Valve with Bi-Level Electric Float

FP-450-65

- Very low supply pressure
- Low noise generation
- Energy cost critical systems
- Systems with poor water quality

The Model FP 450-65 Level Control Valve with Bi-Level Electric Float is a hydraulically operated, diaphragm actuated, control valve that controls reservoir filling in response to an electric float switch signal.

The valve fully opens at a pre-set low level and closes at a pre-set high level.

- **Sizes:** 1½" to 14"
- **Max Pressure Rating:** 16 bar/235 psi



BERMAD Level Control Valve with Bi-Level Vertical Float

FP-450-66/67

Reservoir filling

- Very low supply pressure
- Low noise generation
- Energy cost critical systems
- Systems with poor water quality

The Model FP 450-66 Level Control Valve with Bi-Level Vertical Float is a hydraulically controlled, diaphragm actuated control valve that controls reservoir filling in response to a hydraulic on/off float pressure command.

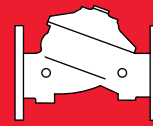
The Valve opens at pre-set low level and closes at a pre-set high level.

- **Sizes:** 1½" to 14"
- **Max Pressure Rating:** : 16 bar/235 psi

Note: The 450-67 is for reservoir "always full" application



*Pictures are for illustration only



BERMAD Basket Strainer, ANSI #150RF, UL Listed 200 psi

FP-60F-01

The BERMAD FP-60F Basket Strainers are designed to be installed in fire protection pipelines primarily to prevent the clogging of fire system nozzles of automatic sprinklers, deluge spray or foam systems.

The FP-60F strainers are also well suited for use upstream of BERMAD Pressure Control Valves and Deluge valves as well as other pipeline debris sensitive Fire System Devices. The ratio of the FP-60F strainer's basket area to its inlet pipe area is larger than 10:1, ensures continued system performance even in the most debris-ridden firewater. The high capacity of the FP-60F also results in a lower pressure drop and enables longer intervals between cleaning and servicing. The BERMAD FP-60F is designed for in-line maintenance with easy access, requiring only the top cover removal for basket screen cleaning or without removing the main strainer housing body from the pipeline.

- Sizes: 3" to 24"
- Max Pressure Rating: 14 bar/200 psi
- UL Listed: 3" to 12"



BERMAD Basket Strainer with In-Line Flushing Outlet (Plugged)

FP-60F-01-D

The BERMAD FP-60F-01-D is designed for in-line maintenance available with a large diameter flushing outlet for immediate and easy screen cleaning. In addition easy in-line access to the basket screen is enabled, requiring only the cover removal.

The FP-60F-01-D strainers are also well suited for use upstream of Pressure Control Valves and Deluge valves as well as other debris sensitive Fire System Devices.

- Sizes: 3" to 12"
- Max Pressure Rating: 17.2 bar/250 psi
- UL Listed: 3" to 12"



BERMAD Basket Strainer with In-Line Flushing Valve

FP-60F-01-DV

ANSI #150RF, UL Listed 250 psi

The BERMAD FP-60F-01-DV is designed for in-line maintenance available with a large diameter flushing outlet and drain valve for immediate and easy screen cleaning. In addition easy in-line access to the basket screen is enabled, requiring only the cover removal. The FP-60F-01-DV strainers are also well suited for use upstream of Pressure Control Valves and Deluge valves as well as other debris sensitive Fire System Devices.

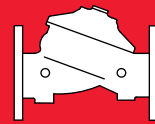
- Sizes: 3" to 12"
- Max Pressure Rating: 17.2 bar/250 psi
- UL Listed: 3" to 12"



Notes for BERMAD Strainers:

- (1) Ductile Iron Body ER Epoxy (RAL 3002) FB Coated
- (2) Stainless Steel 316 Screen
- (3) Bolts & Nuts: Stainless Steel 304

*Pictures are for illustration only



BERMAD Y-Strainer

FP-70F

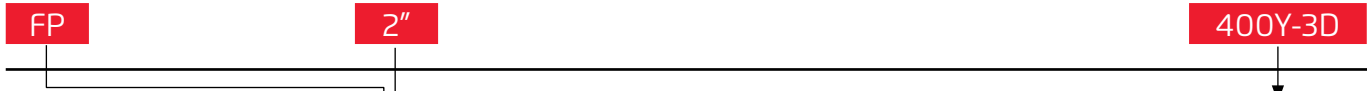
The BERMAD FP-70F Strainer is designed to remove foreign matter such as stones, sticks, etc, from the pipeline.

It is recommended to install the strainer upstream from control valves, flow meters and other system appliances.

- Sizes: 1½" to 18"
- Max Pressure Rating: 25 bar/365 psi



*Pictures are for illustration only



Category	Code
Standard	FP
Sea or Brackish water	FS
Foam Concentrate	FC

Valve Size	
1½"	40 mm
2"	50 mm
3"	80 mm
4"	100 mm
6"	150 mm
8"	200 mm
10"	250 mm
12"	300 mm
14"	350 mm
16"	400 mm

Group	Description	Model
Classic Deluge with Local Reset ^{(1), (2)}	Hydraulically Controlled with EasyLock	400Y-1M
	Electrically Controlled with EasyLock	400Y-2M
	Electrically Controlled with 3/2 Local Reset Pilot	400Y-3UM
	Pneumatically Controlled with Local Reset Pilot	400Y-4M
	Hydraulically Controlled Anti-Columning with Local Reset Pilot ⁽⁵⁾	400Y-5M
	Electro-Pneumatically Controlled with Local Reset Pilot	400Y-6M
Deluge Valve Remote Reset ^{(1), (2)}	Electrically Controlled Deluge Valve	400Y-3U
	Electro Pneumatically Controlled Deluge Valve	400Y-6U
Pressure Control Deluge with Local Reset ⁽¹⁾	Hydraulically Controlled	400Y-1MC
	Electrically Controlled	400Y-2MC
	Pneumatically Controlled	400Y-4DC-H
	Electro Pneumatically Controlled	400Y-6DC-H
Pressure Control Deluge On-Off ⁽¹⁾	Electrically Controlled On-Off, 2-way Solenoid Valve	400Y-2DC
	Electrically Controlled On-Off	400Y-3DC
	Pneumatically Controlled On-Off	400Y-4DC
	Hydraulically Controlled On-Off	400Y-5DC
	Electro-Pneumatically Controlled On-Off	400Y-6DC
On-Off Deluge ⁽¹⁾	Electrically Controlled	400Y-3D
	Electro-Pneumatically Controlled	400Y-6D
	Pneumatically Controlled	400Y-4D
	Hydraulically Controlled	400Y-5D
Foam Concentrate Remote control ⁽¹⁾	Electrically Controlled	400Y-3U-N
	Electro Pneumatically Controlled	400Y-6U-N
	Pneumatically Controlled	400Y-4U-N
	Hydraulically Controlled	400Y-5U-N
Foam Concentrate Pressure Control ⁽¹⁾	Electrically Controlled	400Y-3DC-N
	Electro Pneumatically Controlled	400Y-6DC-N
	Pneumatically Controlled	400Y-4DC-N
	Hydraulically Controlled	400Y-5DC-N
Foam Concentrate Zero Pressure	Electrically Controlled	700E-3X-BO-N
	Electro Pneumatically Controlled	700E-6X-BO-N
	Pneumatically Controlled	700E-4X-BO-N
	Hydraulically Controlled	700E-5X-BO-N
Locally Operated	Locally Controlled Monitor/Deluge Valve	400Y-11
	Monitor/Deluge Valve ⁽¹⁾	400Y-1D
Pre-Action & Dry Pipe ^{(1), (2)}	Single Interlock Electric Release Pre-Action System	400Y-7M
	Double Interlock Electric-Electric Release Pre-Action System	400Y-7BM
	Double Interlock Electric-Pneumatic Release Pre-Action System	400Y-7DM
	Dry Pipe Valve	400Y-DP
Pressure Control Valves	Pressure Reducing Valve ^{(1), (4)}	42T
	Pressure Control & Non-Return Valve ⁽¹⁾	42T-20
	Pressure Reducing Valve ⁽⁹⁾	720-UL
	Pressure Relief Valve ^{(3), (4)}	43T
	Fire Pump Suction Pressure Control Valve	43T-PS
	Pressure Relief Valve ^{(9), (10)}	730-UF
	Anti-Surge Pump Start Control Valve	730-48-BL ⁽⁸⁾
	Differential Pressure Control/Reducing	42T-06
	Differential Pressure Sustaining	43T-06
	Pressure Relief Valve with Electric Override	43T-59
	Level Control	Altitude Pilot ⁽⁶⁾
Modulating Horizontal Float		450-60
Bi-Level Electrical Float		450-65
Vertical Float ⁽⁷⁾		450-66/67

Notes:

- (1) UL Listed for sizes 1½" - 16"
- (2) FM Approved for sizes 1½", 2", 3", 4", 6" & 8"
When provided with full trim (code "A" in Options)
- (3) UL Listed: 1½" - 10"
- (4) FM Approved: 1½" - 10"
- (5) Add Elevation code after the model:
"00" - for elevation below 10m/33ft
"M6" - for Max elevation 35m/115ft
"M7" - for Max elevation 70m/230ft
- (6) Add altitude pilot adjustment ranges after the model:
"M6" for 2-14 m (standard), "M5" for 5-22 m,
"M4" for 15-35 m and "M8" for 25-70
- (7) The model 450-66 is Bi-Level type.
The 450-67 is for reservoir "always full" application
- (8) Add "BL" suffix to the valve code
- (9) UL Listed for sizes 2", 2½", 3", 4", 6" & 8"
- (10) Refer to the catalog sheets for pressure ratings
FM Approved for sizes 2", 2½", 3", 4", 6" & 8"
Refer to the catalog sheets for pressure ratings

BERMAD Standard Configuration



06 - 03

V

C

A5

PR

4DC

NN

7P7K

Optional Additional Features	Code
Differential Pressure Sensing	06
Closing Speed control	01
Opening Speed control	02
Opening & Closing Speed control	03
None	-

Installation/Pattern	Code
Vertical	V
Horizontal	H
Oblique (700 only)	Y ⁽¹⁾
Angle (700 only)	A ⁽¹⁾

Body Material ⁽⁵⁾	Code
Ductile Iron (Standard) ⁽⁶⁾	C
Cast Steel ⁽⁶⁾	S
Stainless Steel 316	N
Nickel Al. Bronze	U

For others consult BERMAD.

End Connections	Code
ANSI #150RF (Standard)	A5
ANSI #150RF-SF ⁽⁷⁾	AM
ANSI #150FF	a5
ANSI #150FF-SF ⁽⁷⁾	aM
ANSI #300RF	A3
ANSI #300FF ⁽⁷⁾	a3
ANSI #300FF-SF ⁽⁷⁾	aS
ANSI #300RF-SF ⁽⁷⁾	AS
ISO-PN16	16
ISO-PN25 ⁽¹⁾	25
Grooved ANSI C606 235 psi (16 bar) ⁽²⁾	VI
Grooved ANSI C606 365 psi (25 bar) ⁽²⁾	V2

Voltage (N.O. or N.C)*	Code
24VDC - N.C. (Standard)	4DC
24VDC - N.O.	4DO
24VDC - Magna Latch	4DS
110VDC - N.C.	5DC
110VDC - N.O.	5DO
110V/50-60 - N.C.	5AC
110V/50-60 - N.O.	5AO
220V/50-60 - N.C.	2AC
220V/50-60 - N.O.	2AO

* N.O. or N.C. refers to main valve status when solenoid de-energized

Tubing & Fittings	Code
Stainless Steel 316 (Standard)	NN
Monel	MM

For others consult BERMAD.

Coating	Code
Polyester Red (Standard) ⁽⁶⁾	PR
High Build Epoxy Red RAL 3002 ⁽⁶⁾	ER
Uncoated	UC

Notes:

- (1) 700 series only
- (2) Size 1½ to 8" only
- (3) Instrument supplied loose
- (4) Linear type, for Rotating Position Indicator or Switch Box add the letter "R" before the code e.g. RS, RS9, RSS9
- (5) Other materials available – consult BERMAD
- (6) Coated internally and externally
- (7) Serrated Finish (SF) Bronze/Steel alloys as per MSS-SP-6, applicable for Uncoated S.Steel, Ni.A.Bronze and other high alloys only

Options	Code
Pressure Switch, General Purpose ⁽³⁾	P
Ex Proof Pressure Switch ⁽³⁾	P7
Ex d ATEX Pressure Switch ⁽³⁾	P9
Ex d Pressure Switch, Monel Sensor	P9m
Ex d Pressure Switch, SS316 Enclosure	P9Jn
Ex d Pressure Switch, SS316 Enclosure, Monel Sensor	P9mJn
Single Limit Switch, General Purpose ⁽⁴⁾	S
Single Ex d Proximity Limit Switch ⁽⁴⁾	S9
Double Ex d Proximity Limit Switch ⁽⁴⁾	SS9
Pressure Gauge Assembly ⁽³⁾	6
S.S. Glycerin Pressure Gauge Assembly ⁽³⁾	6n
Monel Pressure Gauge Assembly ⁽³⁾	6m
Ex Proof NEC Class 1 Div.1 Solenoid	7
Ex d ATEX Solenoid	9
Drip Check	DC
Drain Valve	DV
Manual Emergency Release Box	D
Mechanical Latching Pilot	H
Mechanical Latching Solenoid	H1
Magna-Latch Solenoid	H2
Water Motor Alarm Assembly ⁽³⁾	W
EPDM Elastomer	E1
NBR Elastomer	E3
Large Control Filter	F
Valve Position Indicator, Linear	I
Valve Position Indicator, Rotating	RI
Junction Box	J
S.S. Solenoid Valve	K
S.S. 316 Trim Accessories	N
Pressure Transmitter ⁽³⁾	Q
Drain and Indicating Components	A
S.S. 316 Seat Ring	T

Separate Items & System Components

Description	BERMAD Catalog Number
Water Motor Alarm Assy. (W) w/Strainer for Deluge/Preaction System	9901240028
AMD-74, Air Maintenance Device w/Regulator for External Pressure Supply (standard materials)	TEX0000003
AMD-76, Air Maintenance Device Regulated By-Pass Pressure Supply (standard materials)	TEX0000009
Manual Release Station Model-D w/S.S. 304 Box-Brass valve	2920400093
S.S. 316 Manual Release Station Model-DN w/S.S. 316 Box	2920451093

BERMAD Standard Configuration





**UNDERWRITERS
LABORATORIES**

Deluge Type (VLFT)
Special System Water Control Valves
Pressure Reducing Type (VLMT)
Double Interlock Type (VLJH)



FACTORY MUTUAL

Pressure Relief Valves
Process Control Valves
Pressure Reducing Valves
Dry Pipe Valves
Deluge Sprinkler Systems
Preaction Sprinkler Systems
Refrigerated area Sprinkler Systems



DET NORSKE VERITAS

Marine and Offshore Type Approval
Blast Proof Certification



**VDS
SCHADENVERHUETUNG**

German Standard and European Certification for
Fire Protection Deluge Valves



LLOYD'S REGISTER

Marine and Offshore Type Approval



**AMERICAN BUREAU
OF SHIPPING**

Marine and Offshore Type Approval
Blast Proof Certification



GOST, RUSSIA

Compliant with the Russian Federation
Standard GOST R 51052-2002 inc Seismic
Resistance



**NATIONAL FIRE PROTECTION
ASSOCIATION**

Compliant with codes:
NFPA 11 Low, medium and high Expansion Foam
NFPA 13 Installation of Sprinkler Systems
NFPA 15 Water Spray Fixed Systems
NFPA 16 Deluge Foam-Water Systems
NFPA 20 Installation of Stationary Pumps for Fire
Protection
NFPA 24 Private Fire Service Mains
NFPA 25 Water-Based Fire Protection Systems

BERMAD Standard International Warranty

BERMAD manufactured products are guaranteed to be free from defect in material and/or workmanship and to perform as advertised when properly installed, used and maintained in accordance with current instructions, written or verbal.

Should any item prove defective within the period set forth for that item, but in any case not later than within 12 (twelve) months from the time that product left BERMAD's premises, and shall be received by BERMAD or its authorized representative, or written notice thereof from the purchaser within 30 days of discovery of such failure – BERMAD will repair or replace any item proven defective in workmanship or material, or will refund the purchase price, at its sole option.

BERMAD will not be responsible for, nor does this warranty extend to, any consequential or incidental damages or expenses of any kind or nature, of any kind, regardless of the nature thereof, including without limitation injury to persons or property, loss of use of the products, loss of goodwill, loss of profits, or any other contingent liabilities of any kind or character alleged to be the cause of loss or damage to the purchaser.

This warranty does not cover damage or failure caused by misuse, abuse or negligence, nor shall it apply to our products upon which repairs or alternations have been made by other than an authorized BERMAD representative.

This warranty does not extend to components, parts or raw materials used by BERMAD but manufactured by others, which shall be covered only to the extent warranted by the manufacturer's warranty.

There are no warranties, express or implied, except this warranty, which is given in lieu of any other warranties, express or implied, including any implied warranty of fitness for a particular purpose.



ozbranding.com



Fire Protection

Find us at:

Website

<http://www.bermad.com/products/fire-protection>

Linked in

<https://www.linkedin.com/company/bermad-fire-protection?trk=biz-brand-tree-co-name>

You Tube

https://www.youtube.com/playlist?list=PLWNTNrSBR43hLwhuBJqxddtQ4wCgfA-_9

